

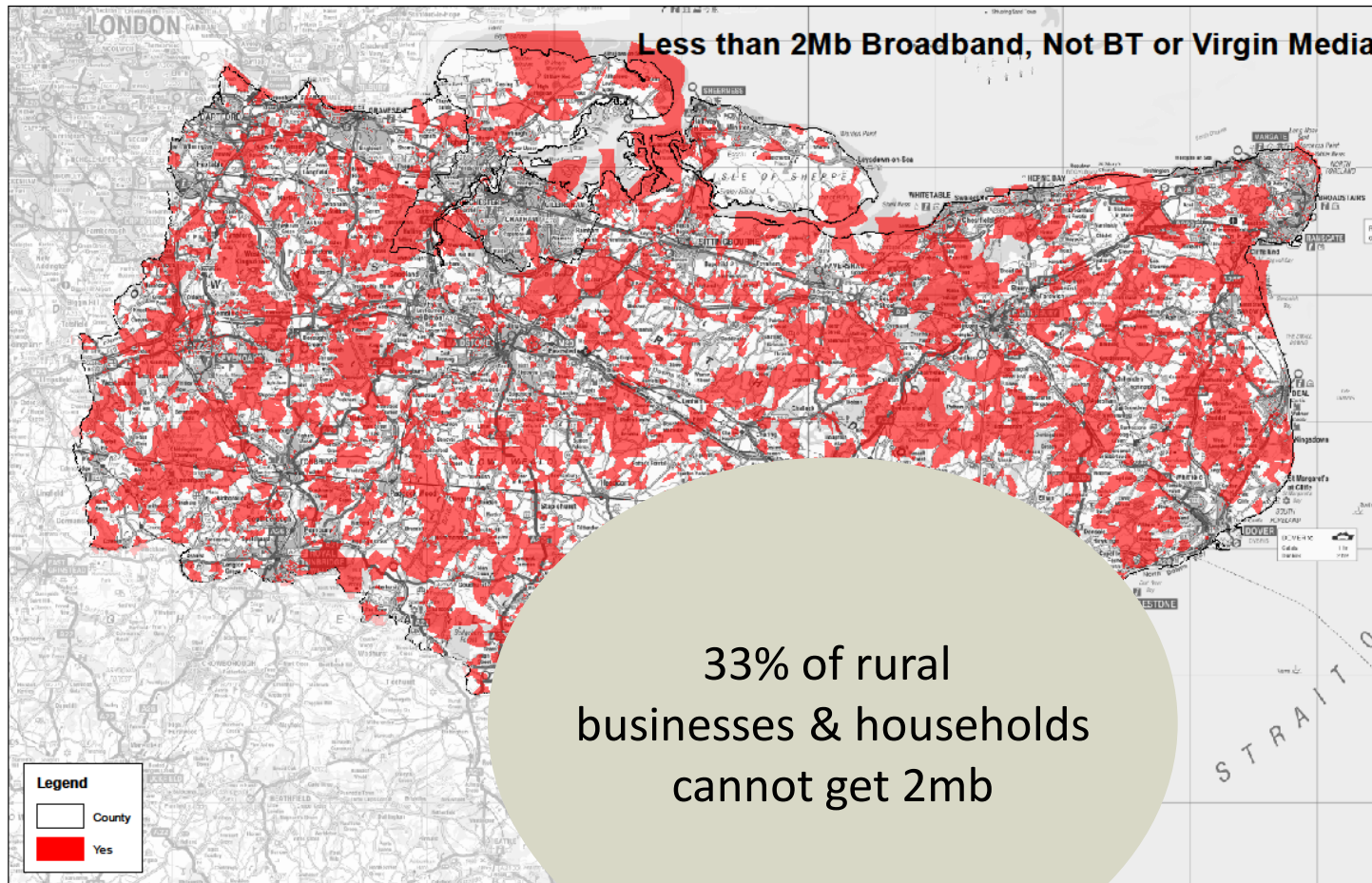
Releasing the potential of Kent's Rural Economy

Next Generation Access Broadband



1. Broadband infrastructure in Kent: the current picture

Digital Britain Standard



Produced by The KCC GIS Team

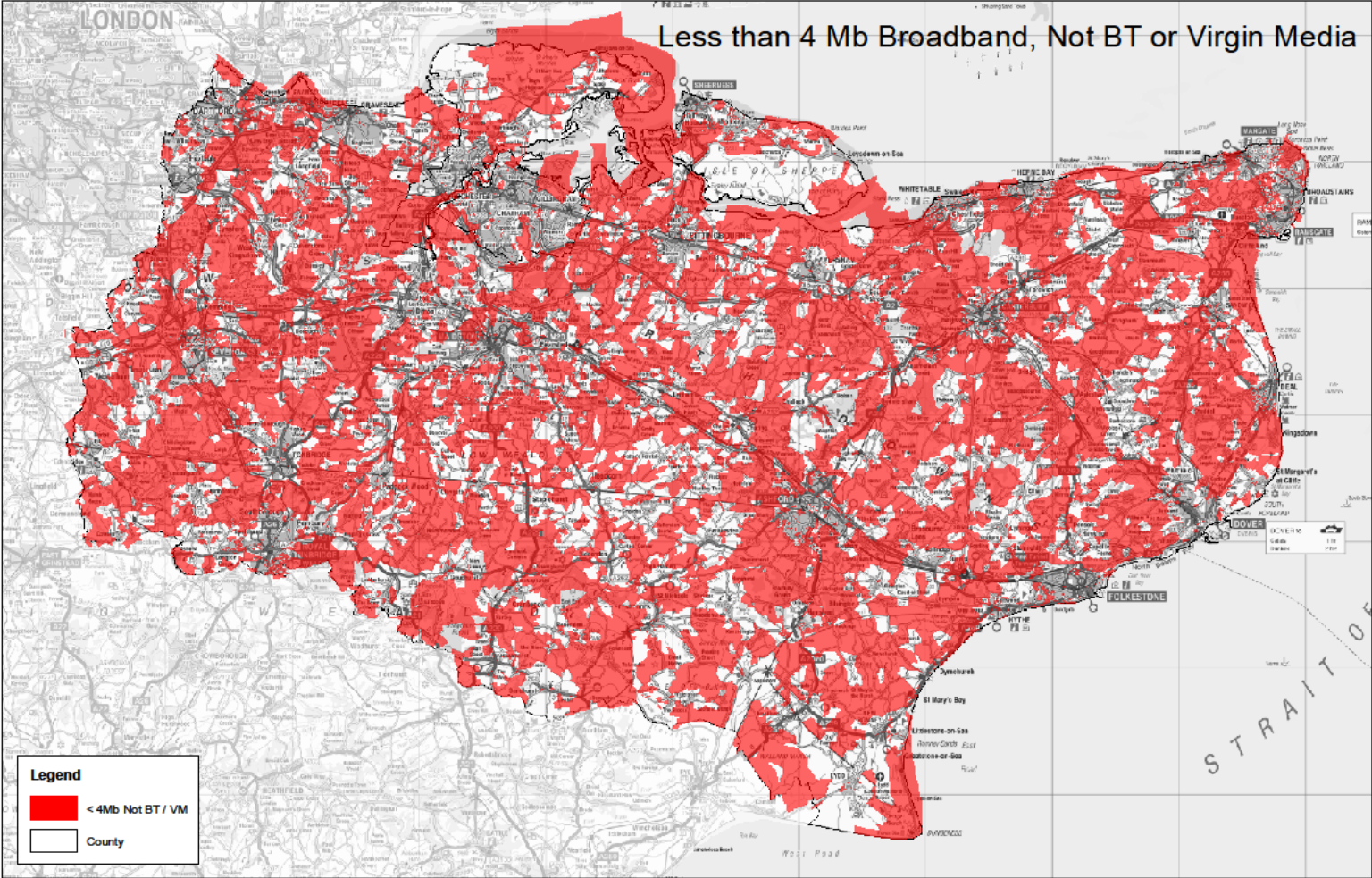
This map is based upon Ordnance Survey material with the permission of Ordnance Survey on behalf of the Controller of Her Majesty's Stationery Office. Unauthorised reproduction infringes Crown Copyright and may lead to prosecution or civil proceedings. 100019238, 2009

Ref: ma1674_7

20 Kilometers



Less than 4 mb



Produced by The KCC GIS Team

This map is based upon Ordnance Survey material with the permission of Ordnance Survey on behalf of the Controller of Her Majesty's Stationery Office (C) Crown Copyright. Unauthorised reproduction infringes Crown Copyright and may lead to prosecution or civil proceedings. 100019238. 2009

Ref: ma1674_13

0 5 10 20 Kilometers

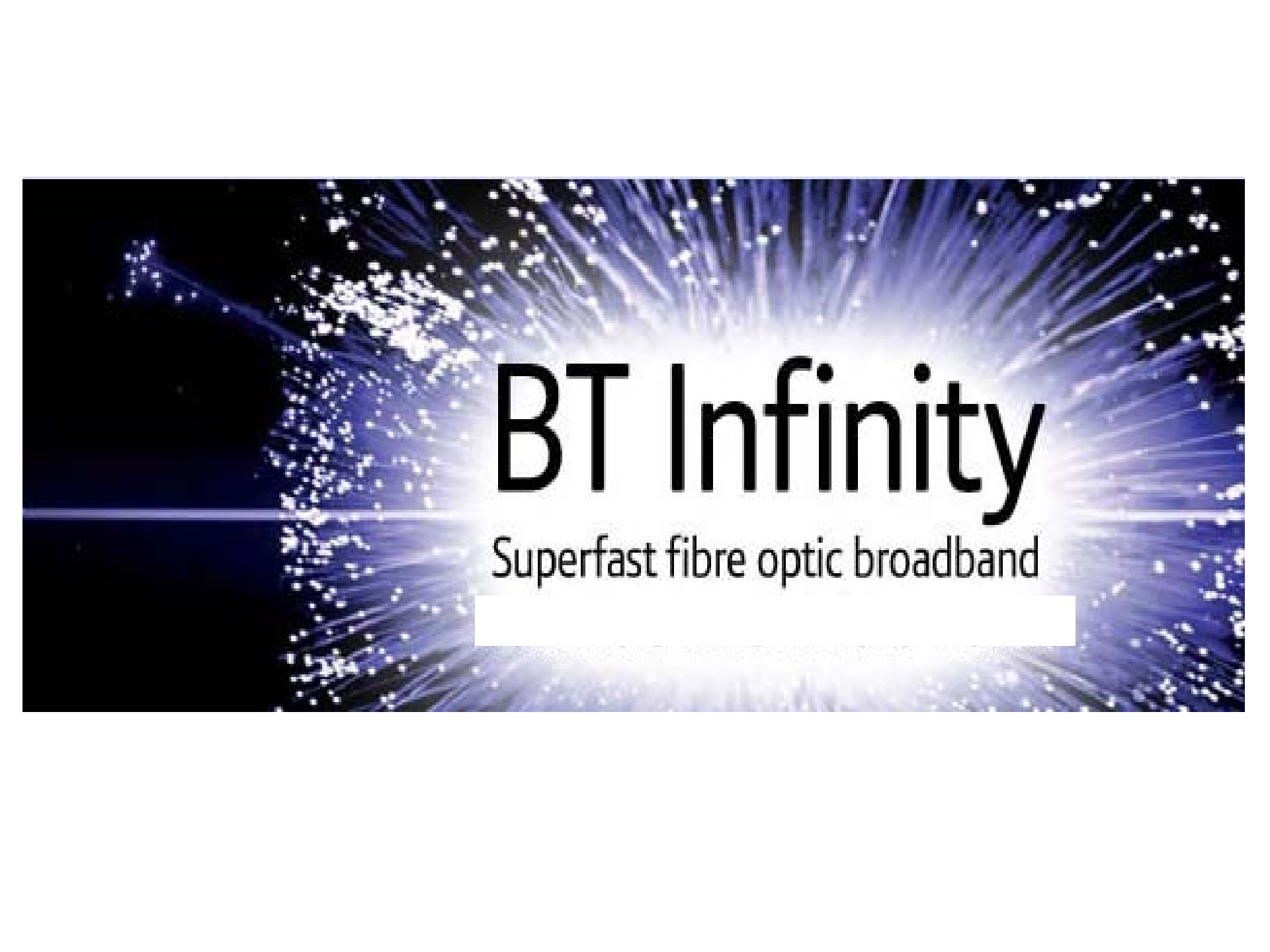


Broadband Leadership Survey 2009

Rank	Country
1	S. Korea
2	Japan
3	Hong Kong
4	Sweden
5	Switzerland
6	Netherlands
7	Singapore
8	Luxembourg
9	Denmark
10	Norway
11	Malta
12	Iceland
13	Australia
14	Lithuania
15	United States
16	Ireland
17	Canada
18	France
19	Estonia
20	Belgium

Rank	Country
21	Finland
22	Slovenia
23	Taiwan
24	Latvia
25	United Kingdom
26	Bahrain
27	Germany
28	Cyprus
29	Czech Republic
30	UAE
31	Romania
32	New Zealand
33	Spain
34	Bulgaria
35	Qatar
36	Austria
37	Portugal
38	Italy
39	Greece
40	Hungary

2. Next Generation Access

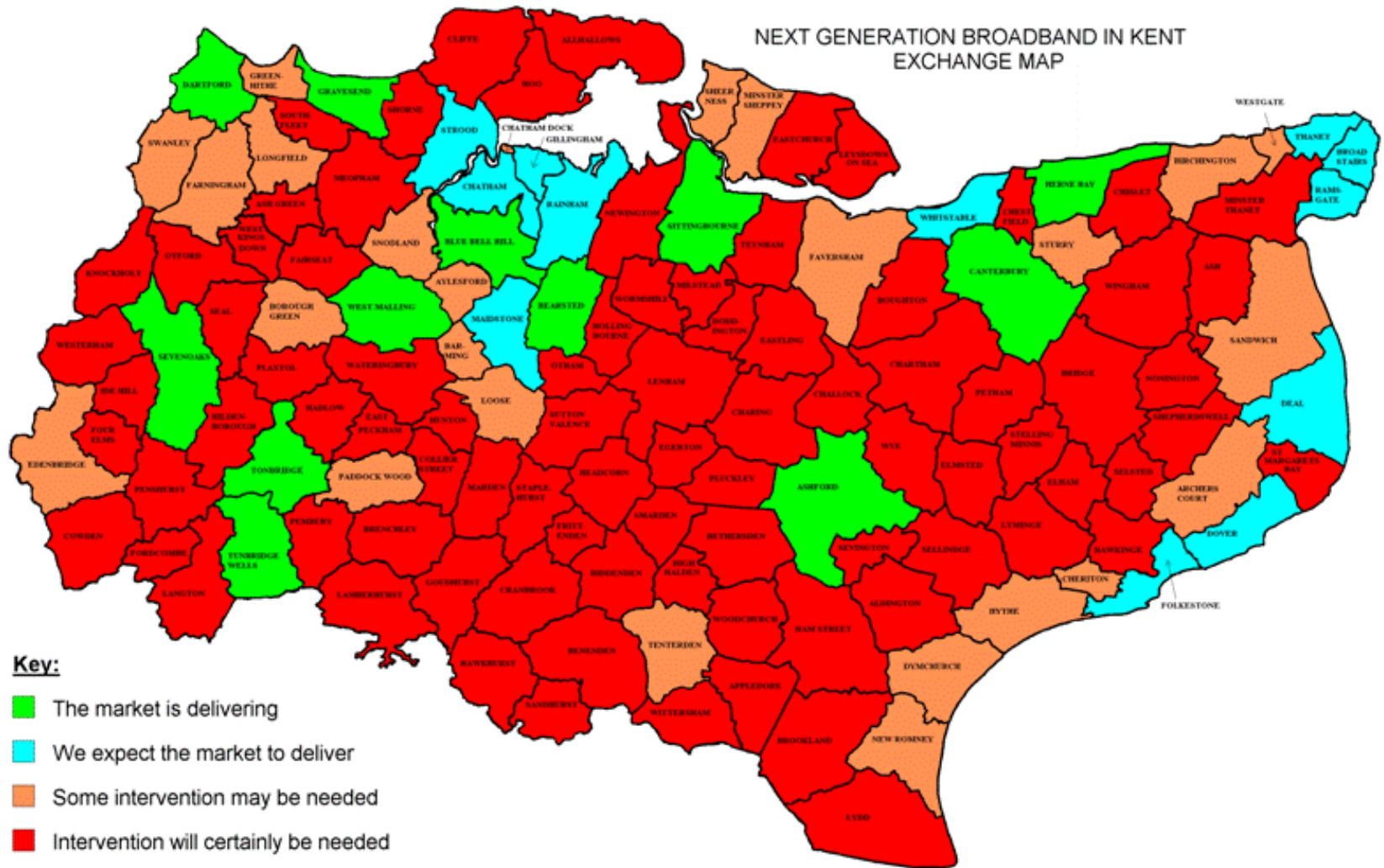


BT Infinity

Superfast fibre optic broadband

[Redacted]

Next Generation Access – the size of the challenge



The size of the challenge

“The shortfall in investment to deliver fibre (effectively unlimited bandwidth) to all properties in Kent (where the market will either not respond or respond too slowly) is in the order of **£1.1 billion.**”

“Over 40% of Kent’s businesses are in areas of market failure for Next Generation Access”

3. Progress to Date

Progress to date

KCC Connecting Kent Programme

- digital enablement of all exchanges in Kent
- programme of addressing 'not spots'
- reduced number of properties without broadband from 37,958 to 14,669

Community Broadband grants (funding to communities with significant 'not spots')

Achieved

Sutton-by-Dover, Tilmanstone, Ulcombe, Barham and Womenswold addressed.

Underway

Selling and Iwade

Pending

Boughton Monchelsea, Chilham, Crockenhill, Manston, Stockbury and Westerham (specifically Crockham Hill)

6444 households and 693 businesses with no or sub 1Mbps broadband access have benefited from completed, or scheduled work.

Next Generation Access for Iwade, Kent

- Super-fast broadband to up to 1400 homes (up to 40Mbps speeds)
- KCC provided the local parish council with a grant of £13,000 and specialist technical advice
- KCC's investment unlocked an estimated £62,000 from BT to connect all the premises with fibre

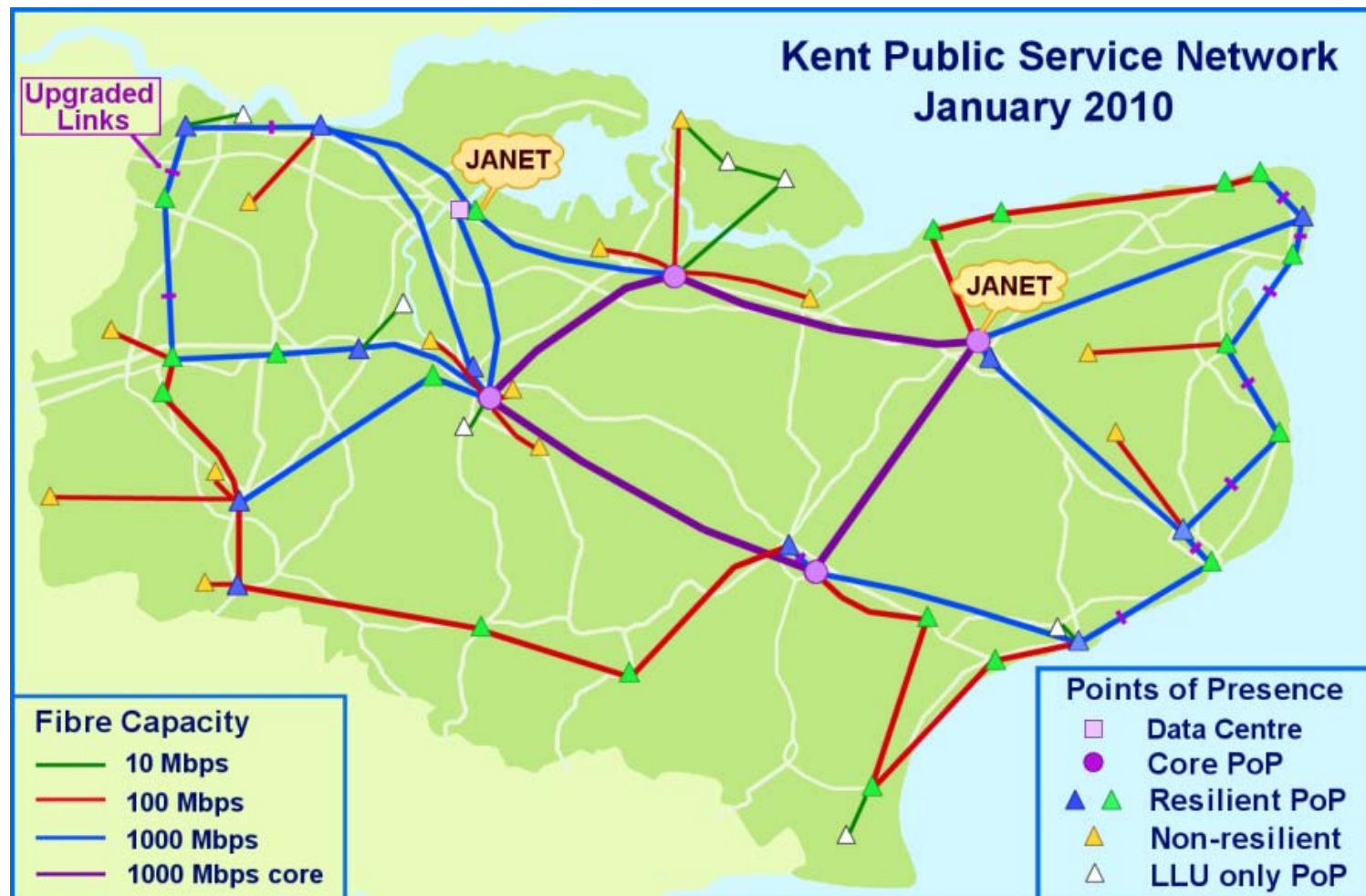


Next Generation Access for Selling, Kent

- Selling (near Canterbury) is a small village of about 340 properties
- Only able to achieve intermittent/very low speeds
- ICS building a 'fibre to the home network' to connect every property at initial speeds of 20mbps.
- ISC added its own funds to the £50,000 grant from KCC to pay for the project.
- The network makes use of the local primary school's existing fibre circuit



Harnessing the potential of the Kent Public Service Network (KPSN)



With 53 points of presence, many in rural areas, KPSN reduces the cost of backhaul distance and cost.

4. Delivering Next Generation Access in Kent – NGA Pilot Work

NGA Broadband Demonstration Project

Demonstration Projects

15 pilots

Creative use of existing asset base
(e.g. KPSN, village halls)

Innovation reducing installation
costs

Focus on economic growth/
business benefits

Evidence Base

Productivity gain for business

Efficiency savings for
public sector

Carbon savings

Sharing Best Practice

Conference/study tour/
Kent prospectus

Online toolkit/resources

House of Commons Event

Securing additional investment

Summary

1. Kent has a higher than average proportion of businesses and properties suffering from poor broadband.
2. There is **growing concern from businesses** and communities over the quality of Kent's broadband infrastructure
3. Published data on NGA provision makes it clear that **most of Kent's rural areas will not benefit from NGA investment.**
4. Given that 40% of Kent's businesses are located in rural part of the county, this is **major barrier to economic growth.**
5. The NGA work planed will create a step change in KCC's involvement in this agenda – and through providing essential business infrastructure act as a catalyst for growth.

Releasing the potential of Kent's Rural Economy

Next Generation Access Broadband

